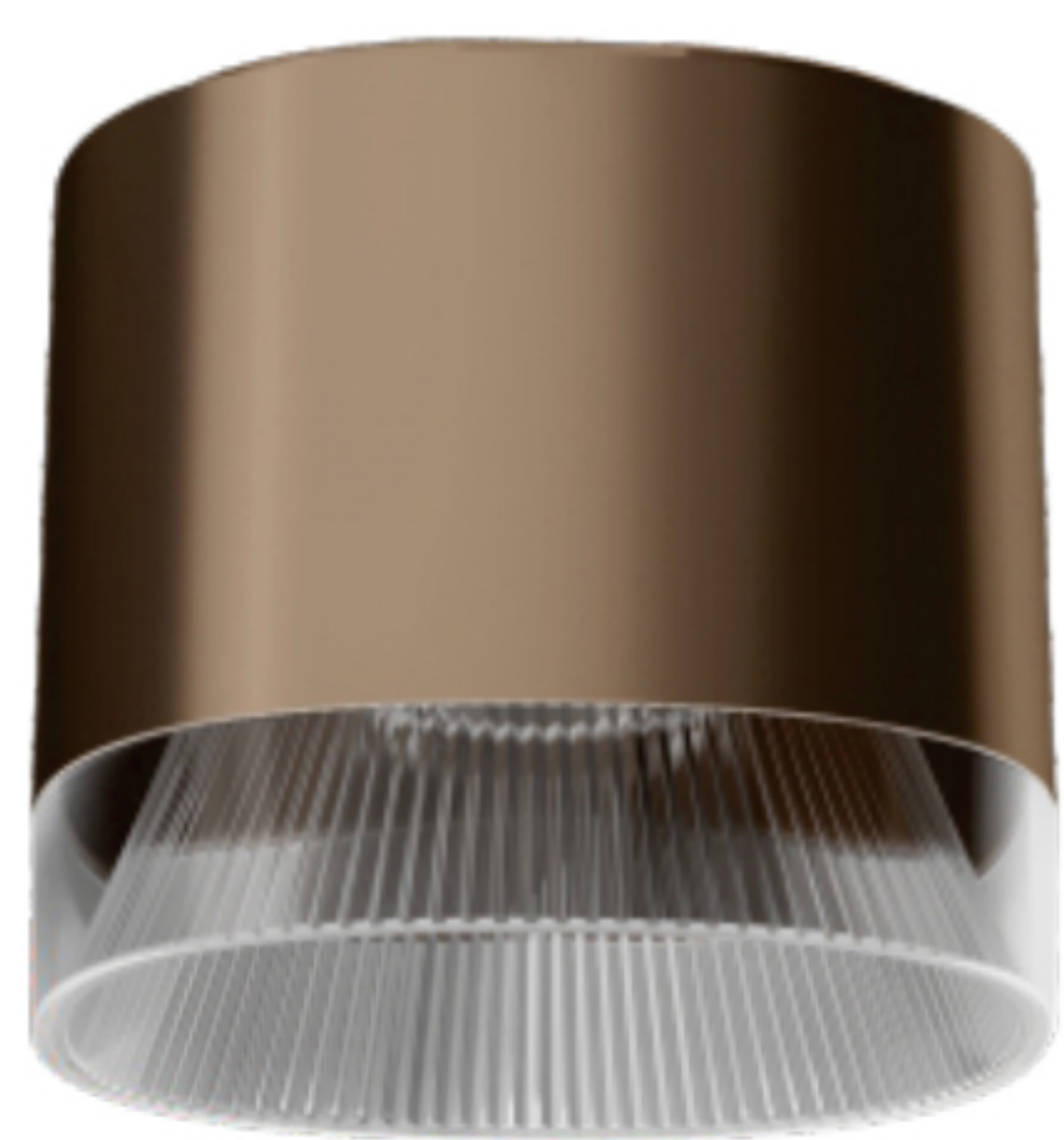


# Modulayer

## Surface mounted luminaires series

Surface



8601-SE-M1-120-H1

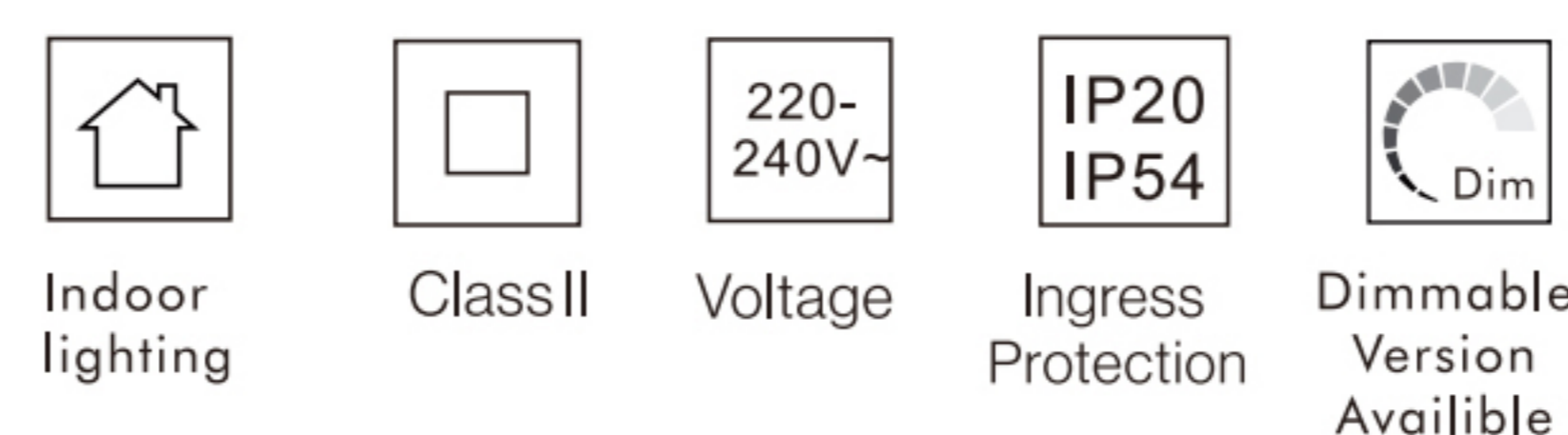
Hyperelliptic

Power	20W
Beam angle	24° /36° /50°
CCT	2700K/3000K/3500K/4000K
Light source	COB
Light efficiency	100-110LM/W
UGR	<17
CRI	>90
Power supply	DC36V 500mA
Operating temperature	-15°C-45°C

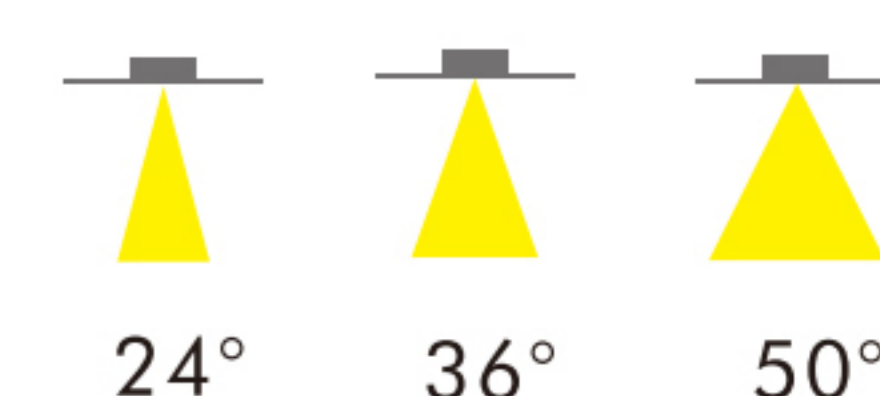
Dimming Options

1	Non-DIM
2	TRIAC
3	0/1-10V
4	DALI
5	Bluetooth

CE RoHS CB



Beam Angles



Surfaces

materials

Aluminium + PC

heatsink colors

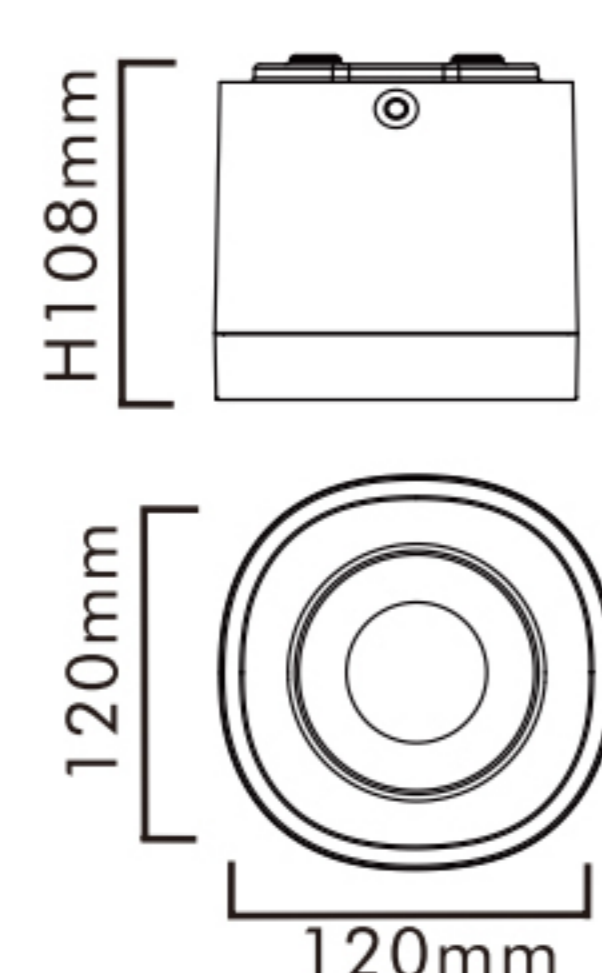
Moon White Mineral Gold

Star Grey Polar Black

surface shade

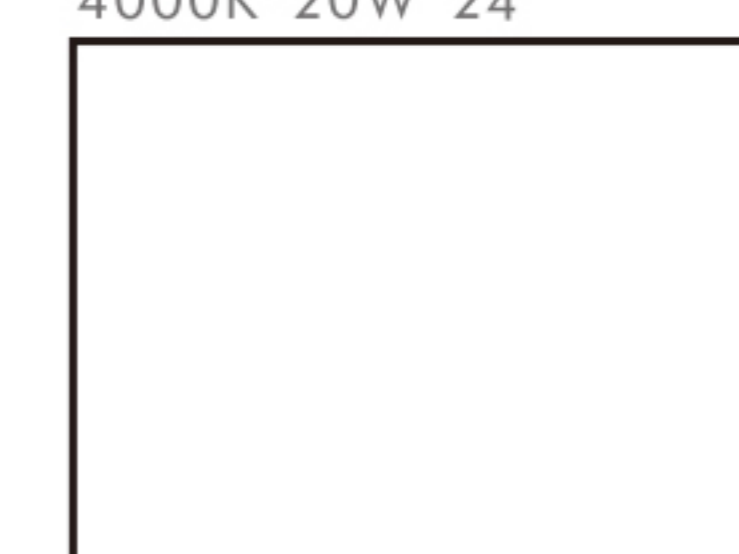
Translucent

Dimensions



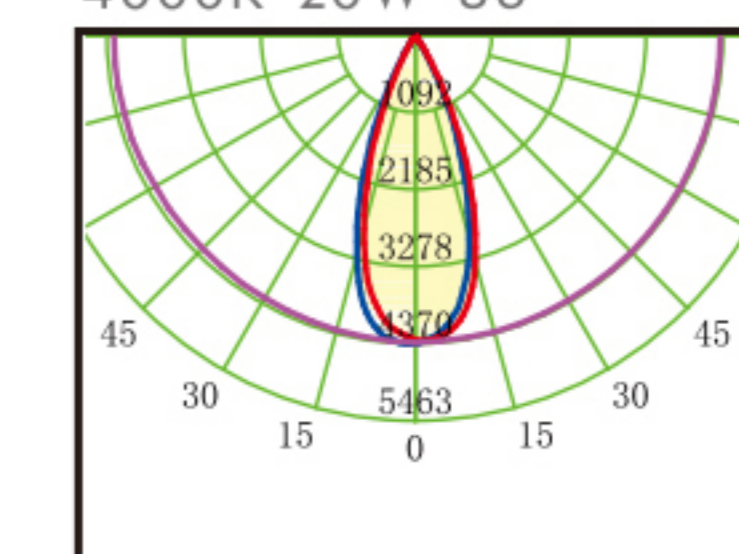
Performance

4000K 20W 24°



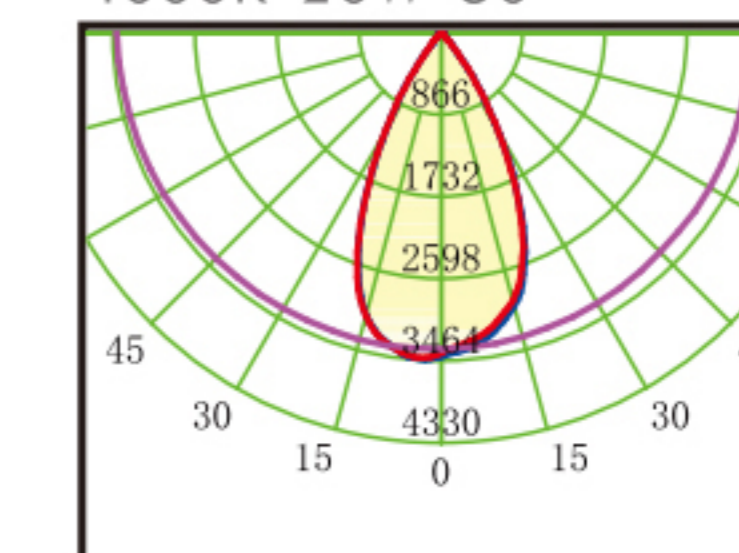
h(m)	E(lx)	D(m)
1		
2		
3		
4		

4000K 20W 36°



h(m)	E(lx)	D(m)
1		
2		
3		
4		

4000K 20W 50°



h(m)	E(lx)	D(m)
1	3417	0.99
2	854	1.98
3	380	2.97
4	213	3.96

for further lighting effects refer to updates photometric and IES files.



project-driven interior lighting solution provider